



**WILMINGTON PUBLIC SCHOOLS
MCAS RESULTS
SPRING 2021**



October 13, 2021



QUESTIONS ADDRESSED

1

How did we do in comparison to prior years?

2

How did we compare to other districts in 2021?

3

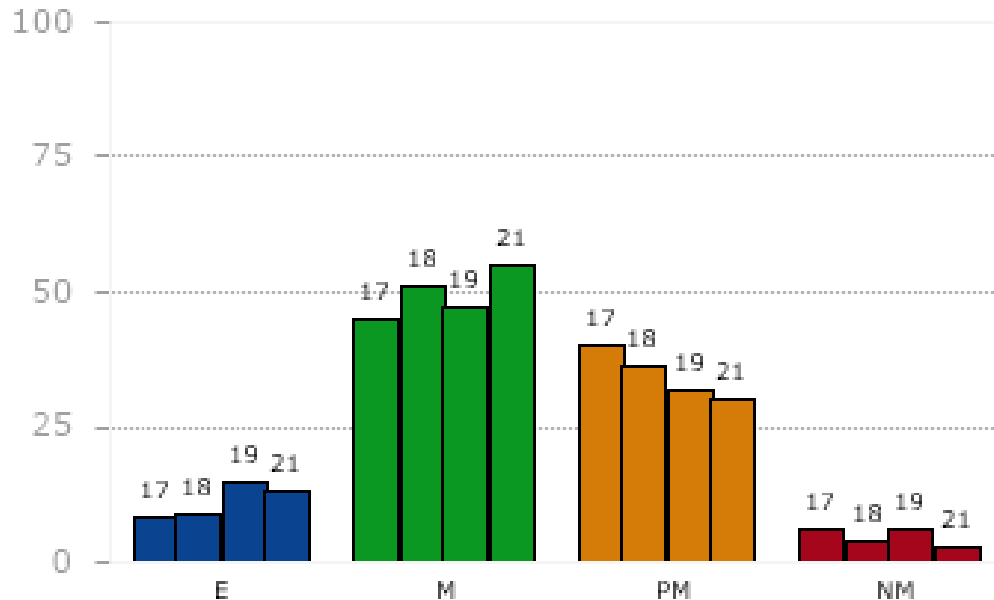
Areas of focus and plan for improvement

1

MCAS SCORES BY GRADE LEVEL OVER TIME 2017-2021

GRADE 3 ENGLISH LANGUAGE ARTS

**GRADE 03 - ENGLISH LANGUAGE ARTS
Percentage of Students by Achievement Level**



GRADE 03 - ENGLISH LANGUAGE ARTS

ACHIEVEMENT LEVEL	2017	2018	2019	2021
Exceeding Expectations (E)	8	9	15	13
Meeting Expectations (M)	45	51	47	55
Partially Meeting Expectations (PM)	40	36	32	30
Not Meeting Expectations (NM)	6	4	6	3

2021 Participation Rate = 92%

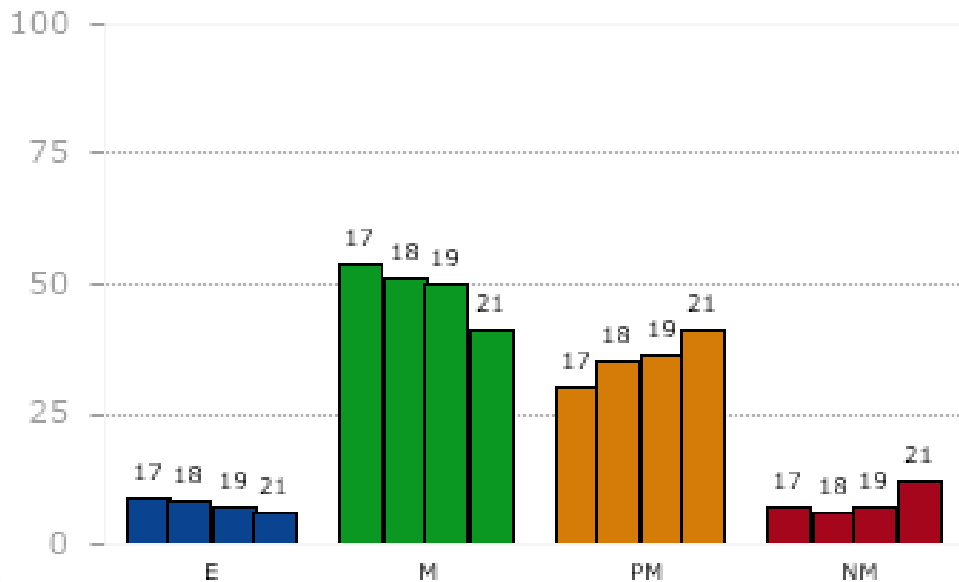
Scores indicate steady improvement over time and no obvious impact from the pandemic.



GRADE 3 MATHEMATICS

GRADE 03 - MATHEMATICS

Percentage of Students by Achievement Level



GRADE 03 - MATHEMATICS

ACHIEVEMENT LEVEL

2017 2018 2019 2021

Exceeding Expectations (E)	9	8	7	6
Meeting Expectations (M)	54	51	50	41
Partially Meeting Expectations (PM)	30	35	36	41
Not Meeting Expectations (NM)	7	6	7	12

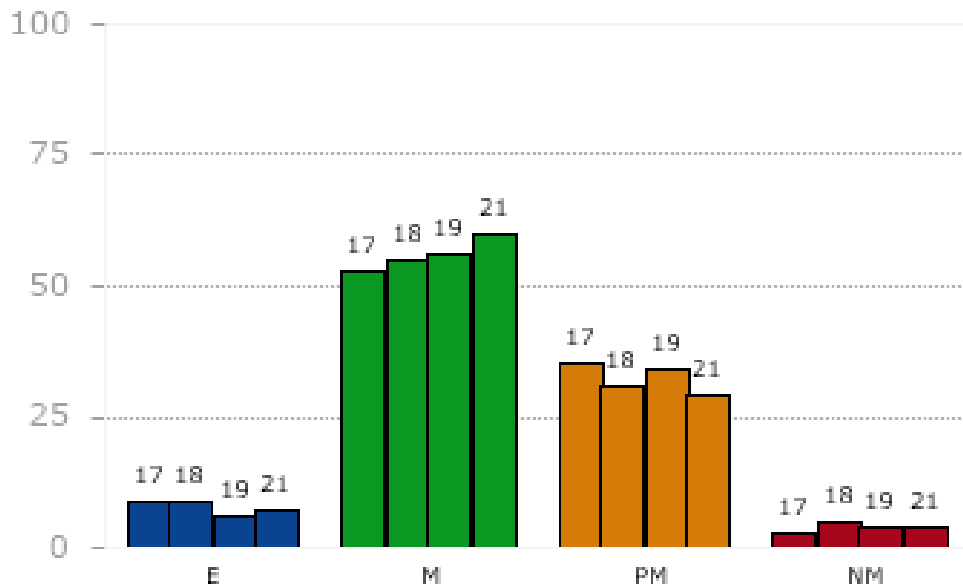
2021 Participation Rate = 92%

Scores show slight decline over time and a slight impact from the pandemic.



GRADE 4 ENGLISH LANGUAGE ARTS

GRADE 04 - ENGLISH LANGUAGE ARTS Percentage of Students by Achievement Level



GRADE 04 - ENGLISH LANGUAGE ARTS

ACHIEVEMENT LEVEL	2017	2018	2019	2021
Exceeding Expectations (E)	9	9	6	7
Meeting Expectations (M)	53	55	56	60
Partially Meeting Expectations (PM)	35	31	34	29
Not Meeting Expectations (NM)	3	5	4	4

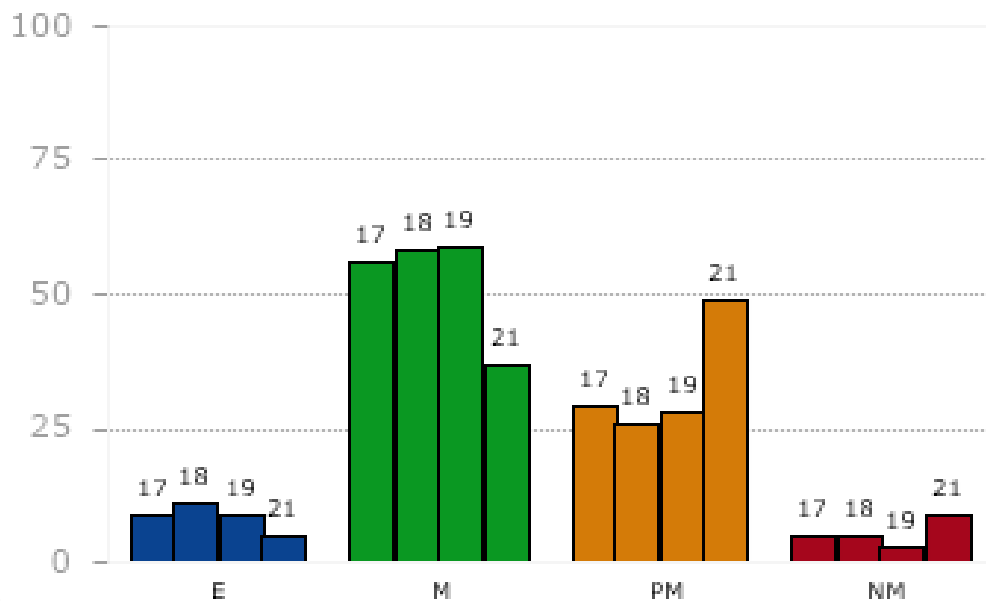
2021 Participation Rate = 95%

Scores indicate steady improvement over time and no obvious impact from the pandemic.



GRADE 4 MATHEMATICS

GRADE 04 - MATHEMATICS Percentage of Students by Achievement Level



GRADE 04 - MATHEMATICS

ACHIEVEMENT LEVEL

2017 2018 2019 2021

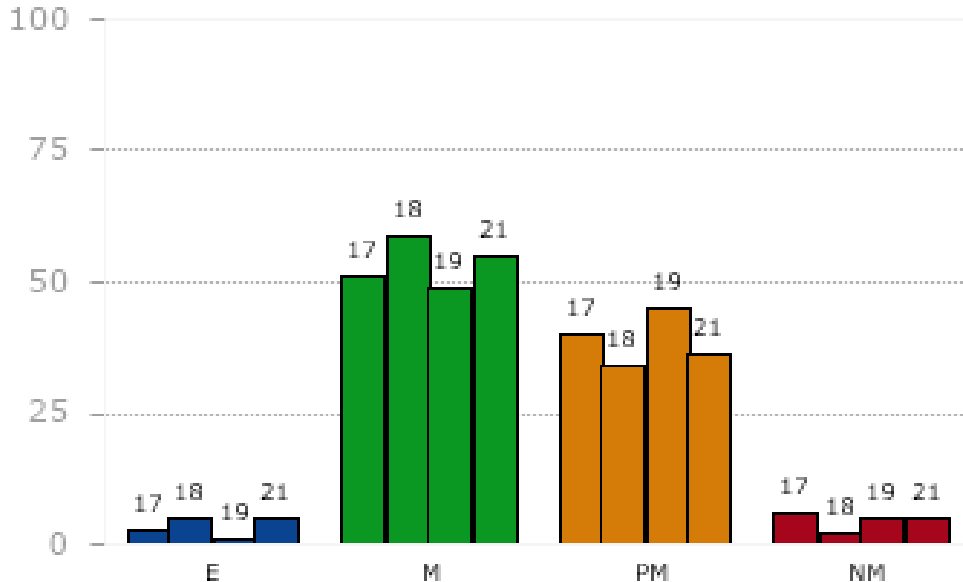
Exceeding Expectations (E)	9	11	9	5
Meeting Expectations (M)	56	58	59	37
Partially Meeting Expectations (PM)	29	26	28	49
Not Meeting Expectations (NM)	5	5	3	9

2021 Participation Rate = 95%

Scores have remained relatively stable over time. It appears there was a negative impact from the pandemic in '21.

GRADE 5 ENGLISH LANGUAGE ARTS

GRADE 05 - ENGLISH LANGUAGE ARTS
Percentage of Students by Achievement Level



GRADE 05 - ENGLISH LANGUAGE ARTS

ACHIEVEMENT LEVEL	2017	2018	2019	2021
Exceeding Expectations (E)	3	5	1	5
Meeting Expectations (M)	51	59	49	55
Partially Meeting Expectations (PM)	40	34	45	36
Not Meeting Expectations (NM)	6	2	5	5

2021 Participation Rate = 94%

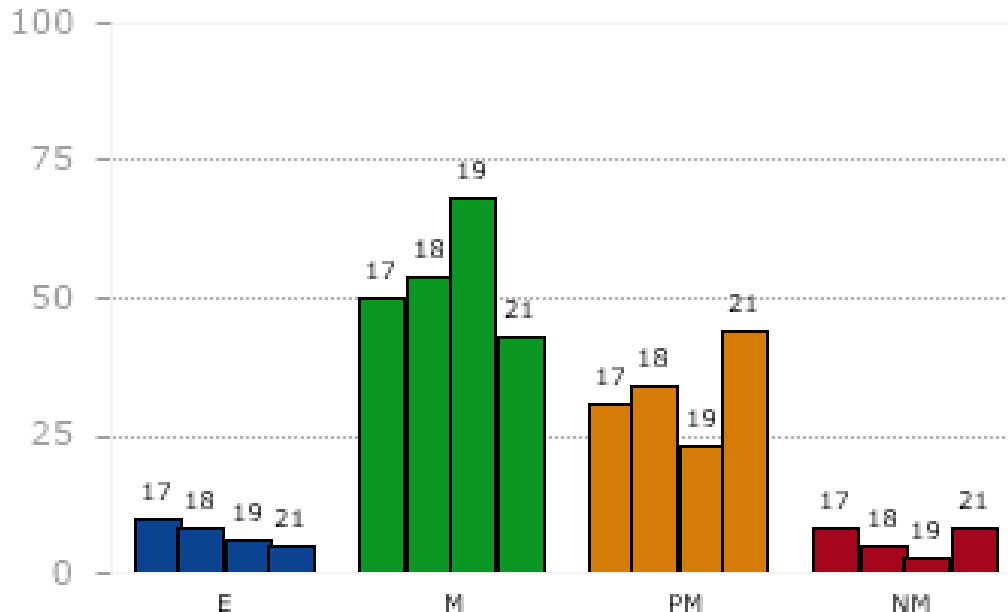
Scores showed improvement in 17 and 18, declined in 19, but rebounded in 21. It appears there was no obvious impact from the pandemic.



GRADE 5 MATHEMATICS

GRADE 05 - MATHEMATICS

Percentage of Students by Achievement Level



GRADE 05 - MATHEMATICS

ACHIEVEMENT LEVEL

2017 2018 2019 2021

Exceeding Expectations (E)	10	8	6	5
Meeting Expectations (M)	50	54	68	43
Partially Meeting Expectations (PM)	31	34	23	44
Not Meeting Expectations (NM)	8	5	3	8

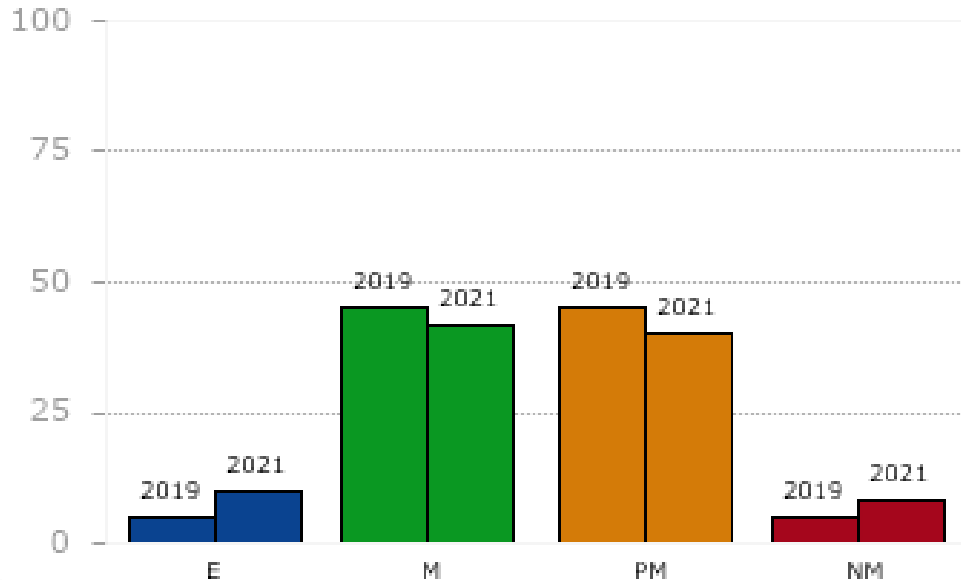
2021 Participation Rate = 94%

Scores show some variability over time but are relatively stable. It appears there was a negative impact from the pandemic.






GRADE 5 SCIENCE AND TECHNOLOGY/ENGINEERING

GRADE 05 - SCIENCE AND TECH/ENG
Percentage of Students by Achievement Level



GRADE 05 - SCIENCE AND TECH/ENG
ACHIEVEMENT LEVEL

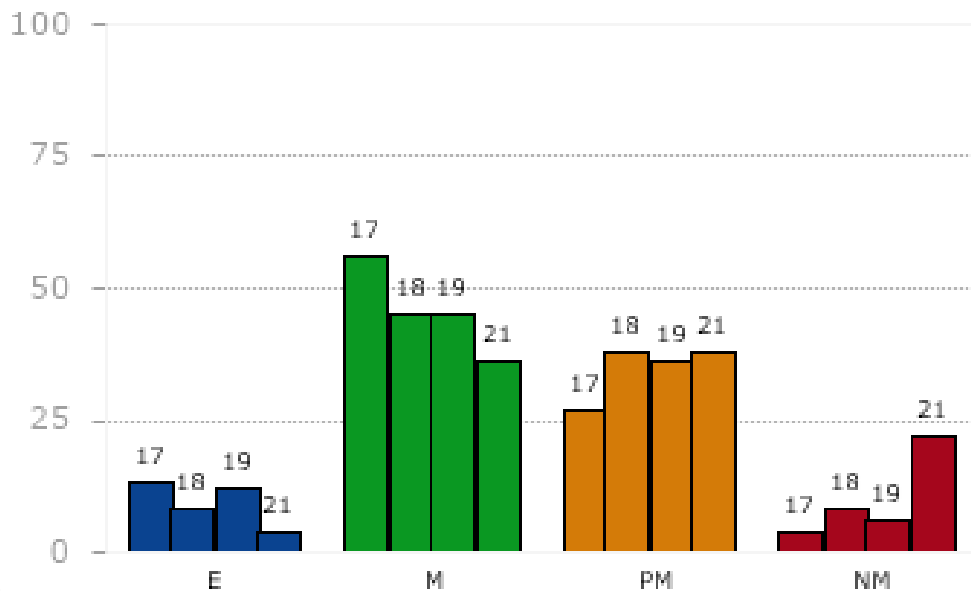
	2019	2021
 Exceeding Expectations (E)	5	10
 Meeting Expectations (M)	45	42
 Partially Meeting Expectations (PM)	45	40
 Not Meeting Expectations (NM)	5	8

2021 Participation Rate = 94%

There are only 2 years of data because we switched to a new version of the assessment in 2019. Scores are relatively stable even given the pandemic.

GRADE 6 ENGLISH LANGUAGE ARTS

GRADE 06 - ENGLISH LANGUAGE ARTS
Percentage of Students by Achievement Level



GRADE 06 - ENGLISH LANGUAGE ARTS

ACHIEVEMENT LEVEL

2017 2018 2019 2021

Exceeding Expectations (E)	13	8	12	4
Meeting Expectations (M)	56	45	45	36
Partially Meeting Expectations (PM)	27	38	36	38
Not Meeting Expectations (NM)	4	8	6	22

2021 Participation Rate = 95%

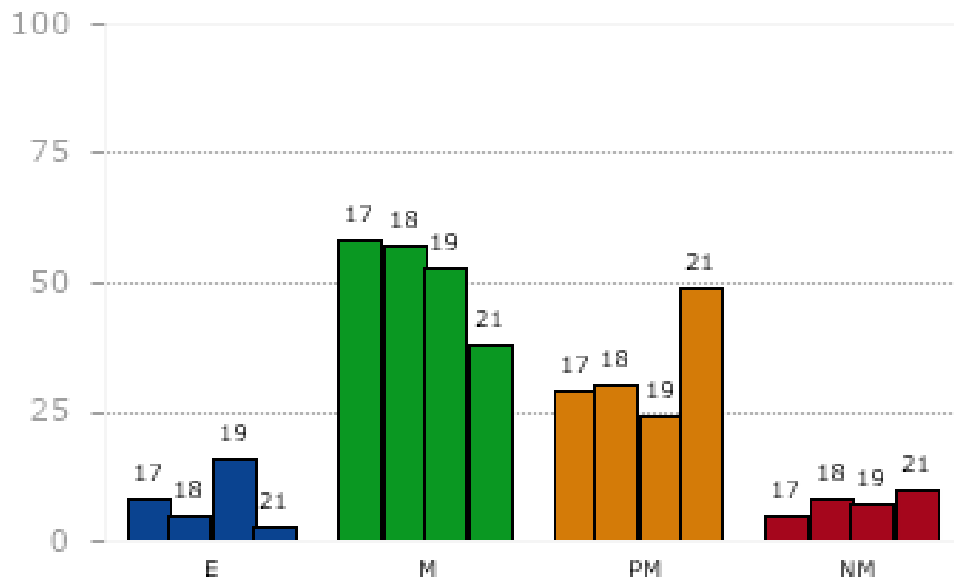
Scores show a steady decline over time and a negative impact from the pandemic.



GRADE 6 MATHEMATICS

GRADE 06 - MATHEMATICS

Percentage of Students by Achievement Level



GRADE 06 - MATHEMATICS

ACHIEVEMENT LEVEL

2017 2018 2019 2021

Exceeding Expectations (E)	8	5	16	3
Meeting Expectations (M)	58	57	53	38
Partially Meeting Expectations (PM)	29	30	24	49
Not Meeting Expectations (NM)	5	8	7	10

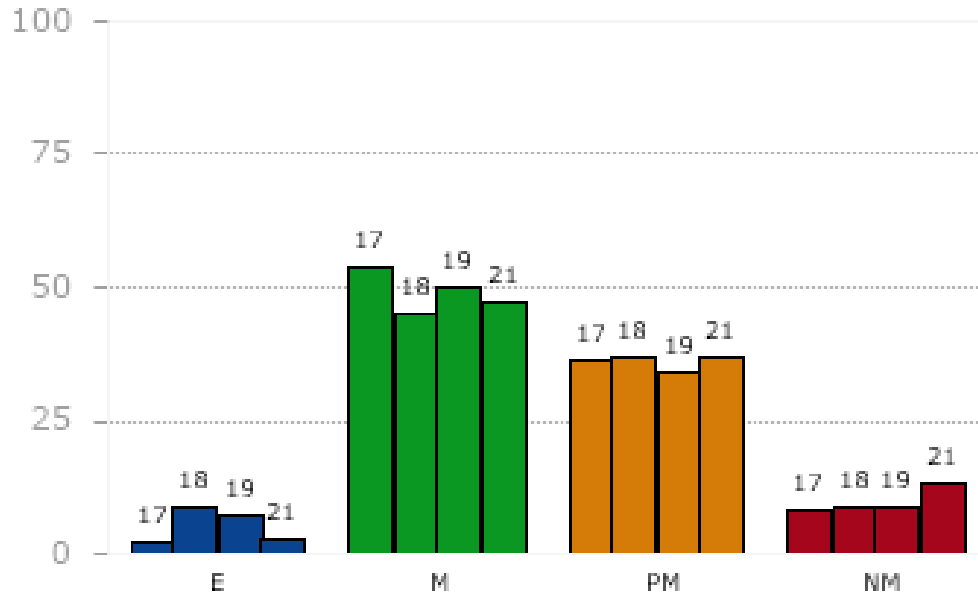
2021 Participation Rate = 96%

Scores are relatively stable over time but it appears there was a negative impact from the pandemic.



GRADE 7 ENGLISH LANGUAGE ARTS

GRADE 07 - ENGLISH LANGUAGE ARTS Percentage of Students by Achievement Level



GRADE 07 - ENGLISH LANGUAGE ARTS

ACHIEVEMENT LEVEL

2017 2018 2019 2021

Exceeding Expectations (E)	2	9	7	3
Meeting Expectations (M)	54	45	50	47
Partially Meeting Expectations (PM)	36	37	34	37
Not Meeting Expectations (NM)	8	9	9	13

2021 Participation Rate = 90%

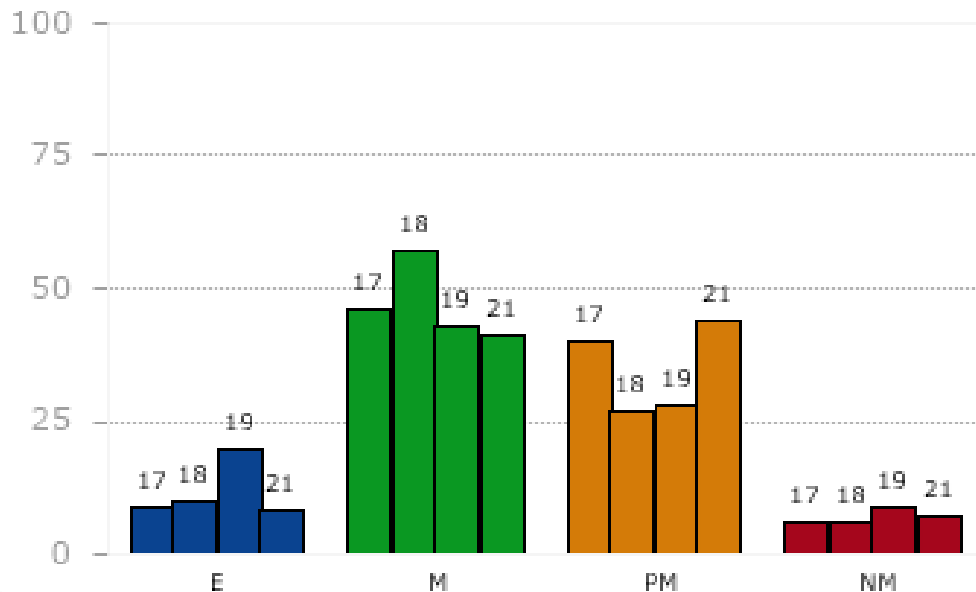
Scores are relatively stable over time and it appears there was a slight impact from the pandemic.

Note: participation rate was low



GRADE 7 MATHEMATICS

GRADE 07 - MATHEMATICS Percentage of Students by Achievement Level



GRADE 07 - MATHEMATICS

ACHIEVEMENT LEVEL

2017 2018 2019 2021

Exceeding Expectations (E)	9	10	20	8
Meeting Expectations (M)	46	57	43	41
Partially Meeting Expectations (PM)	40	27	28	44
Not Meeting Expectations (NM)	6	6	9	7

2021 Participation Rate = 90%

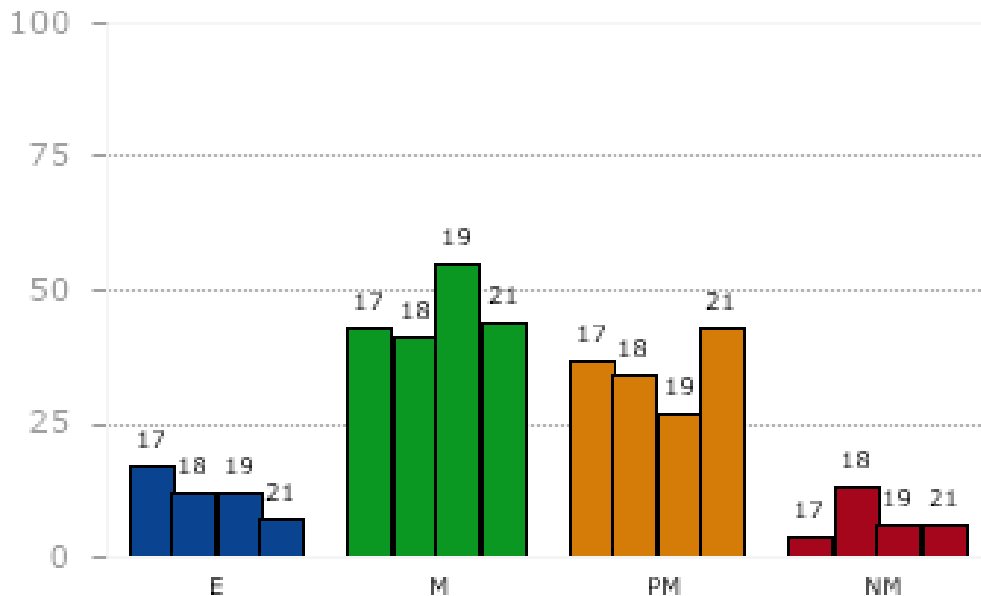
Scores show improvement over time. It appears there was a negative impact from the pandemic.

Note: participation rate was low

GRADE 8 ENGLISH LANGUAGE ARTS



GRADE 08 - ENGLISH LANGUAGE ARTS
Percentage of Students by Achievement Level



GRADE 08 - ENGLISH LANGUAGE ARTS

ACHIEVEMENT LEVEL	2017	2018	2019	2021
Exceeding Expectations (E)	17	12	12	7
Meeting Expectations (M)	43	41	55	44
Partially Meeting Expectations (PM)	37	34	27	43
Not Meeting Expectations (NM)	4	13	6	6

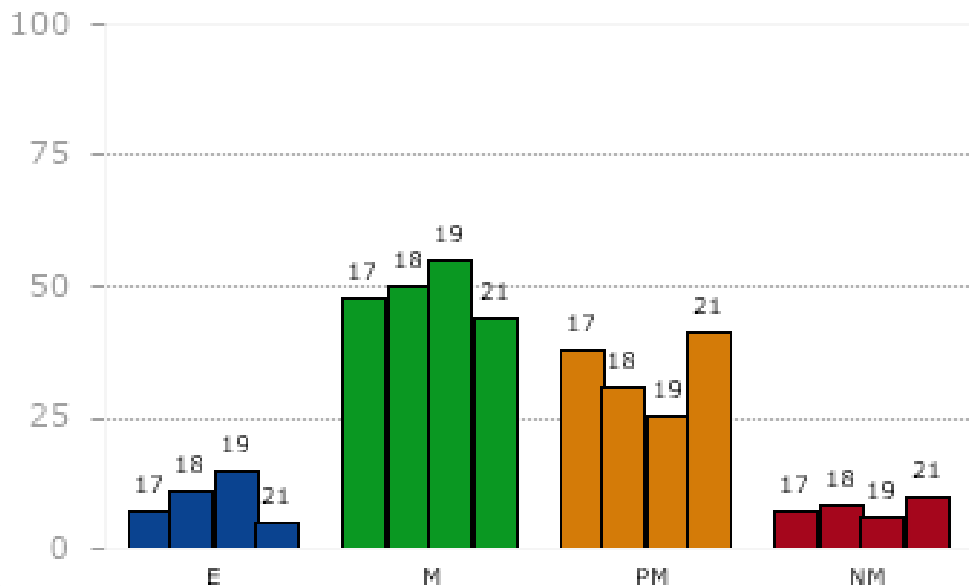
2021 Participation Rate = 94%





Scores are relatively stable over time but it appears there was a negative impact from the pandemic.



GRADE 8 MATHEMATICS

GRADE 08 - MATHEMATICS Percentage of Students by Achievement Level



GRADE 08 - MATHEMATICS		2017	2018	2019	2021
ACHIEVEMENT LEVEL					
	Exceeding Expectations (E)	7	11	15	5
	Meeting Expectations (M)	48	50	55	44
	Partially Meeting Expectations (PM)	38	31	25	41
	Not Meeting Expectations (NM)	7	8	6	10

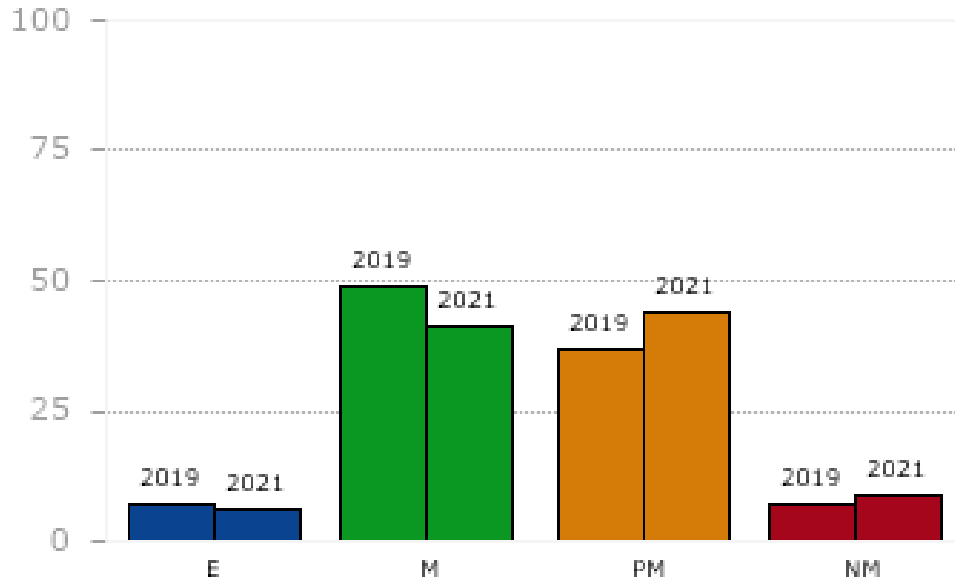
2021 Participation Rate = 94%

Scores have been steadily improving over time but it appears there was a negative impact from the pandemic.



GRADE 8 SCIENCE AND TECHNOLOGY/ENGINEERING

GRADE 08 - SCIENCE AND TECH/ENG
Percentage of Students by Achievement Level



GRADE 08 - SCIENCE AND TECH/ENG
ACHIEVEMENT LEVEL

	2019	2021
Exceeding Expectations (E)	7	6
Meeting Expectations (M)	49	41
Partially Meeting Expectations (PM)	37	44
Not Meeting Expectations (NM)	7	9

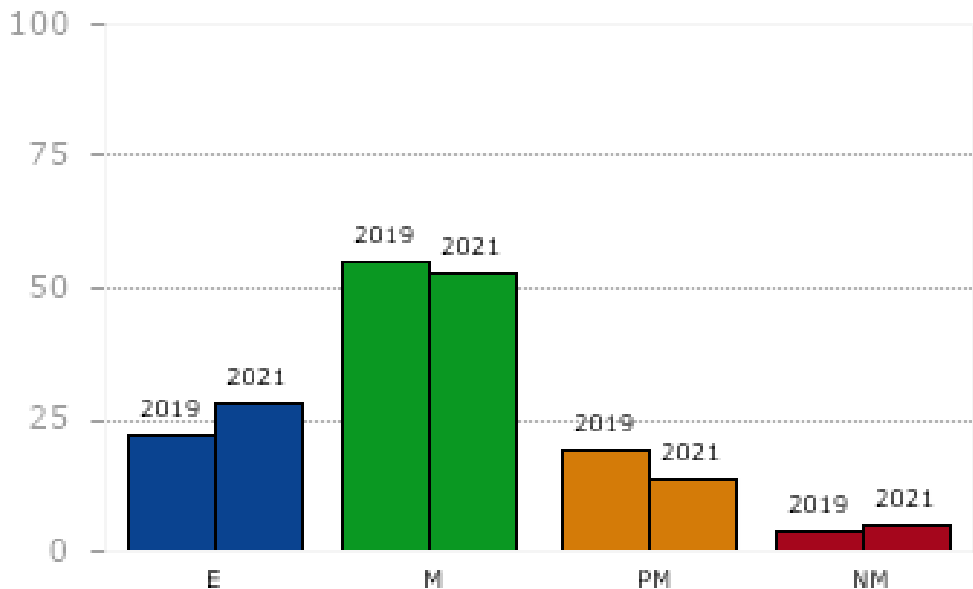
2021 Participation Rate = 91%

There are only 2 years of data because we switched to a new version of the assessment in 2019. It appears there was a slight impact from the pandemic.



GRADE 10 ENGLISH LANGUAGE ARTS

GRADE 10 - ENGLISH LANGUAGE ARTS Percentage of Students by Achievement Level



GRADE 10 - ENGLISH LANGUAGE ARTS ACHIEVEMENT LEVEL

Achievement Level	2019	2021
Exceeding Expectations (E)	22	28
Meeting Expectations (M)	55	53
Partially Meeting Expectations (PM)	19	14
Not Meeting Expectations (NM)	4	5

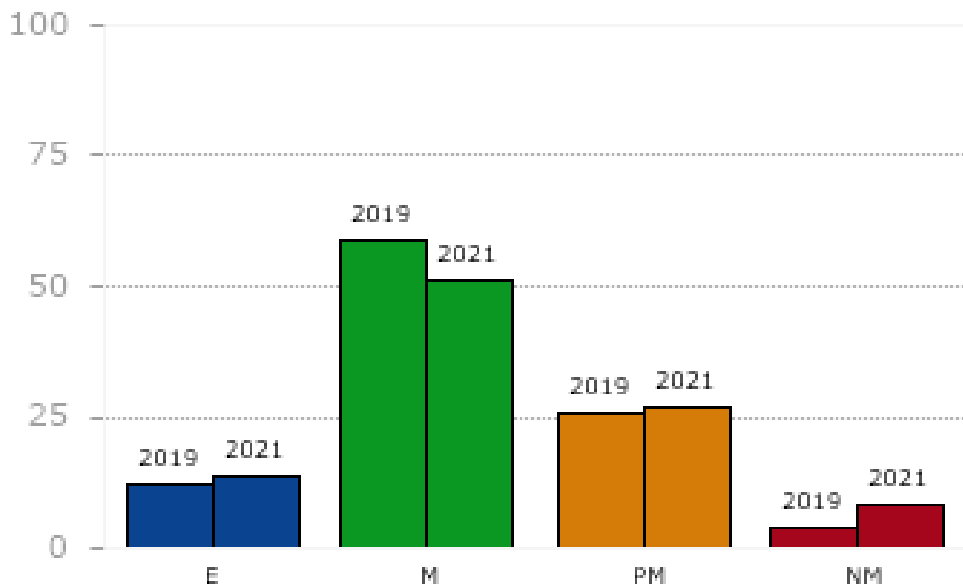
2021 Participation Rate = 96%

There are only 2 years of data because we switched to a new version of the assessment in 2019. This data shows growth and no obvious impact from the pandemic.



GRADE 10 MATHEMATICS

GRADE 10 - MATHEMATICS
Percentage of Students by Achievement Level



GRADE 10 - MATHEMATICS

ACHIEVEMENT LEVEL

2019 2021

Exceeding Expectations (E)	12	14
Meeting Expectations (M)	59	51
Partially Meeting Expectations (PM)	26	27
Not Meeting Expectations (NM)	4	8

2021 Participation Rate = 97%

There are only 2 years of data because we switched to a new version of the assessment in 2019. This data shows stability and minimal impact from the pandemic.

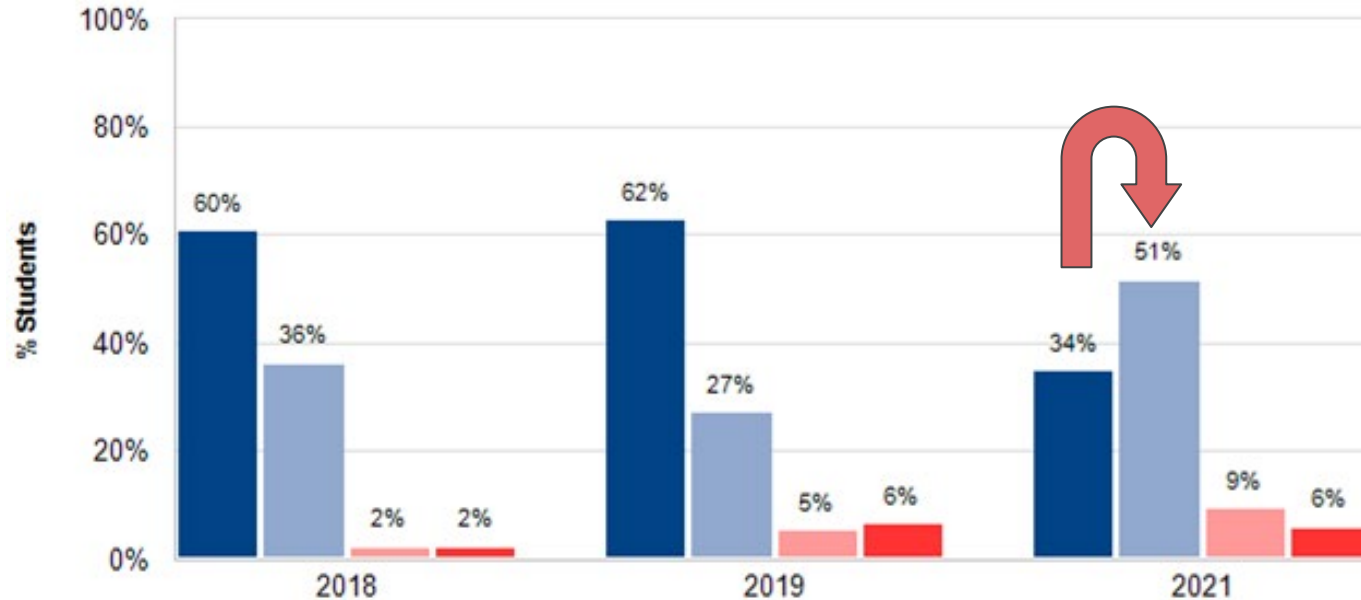


GRADE 9 BIOLOGY

MCAS Achievement Level

- Advanced
- Proficient
- Needs Improvement
- Warning/Failing

Student Group : All Students



Scores were relatively stable but it appears a substantial number of students moved from Advanced to Proficient due to the pandemic.

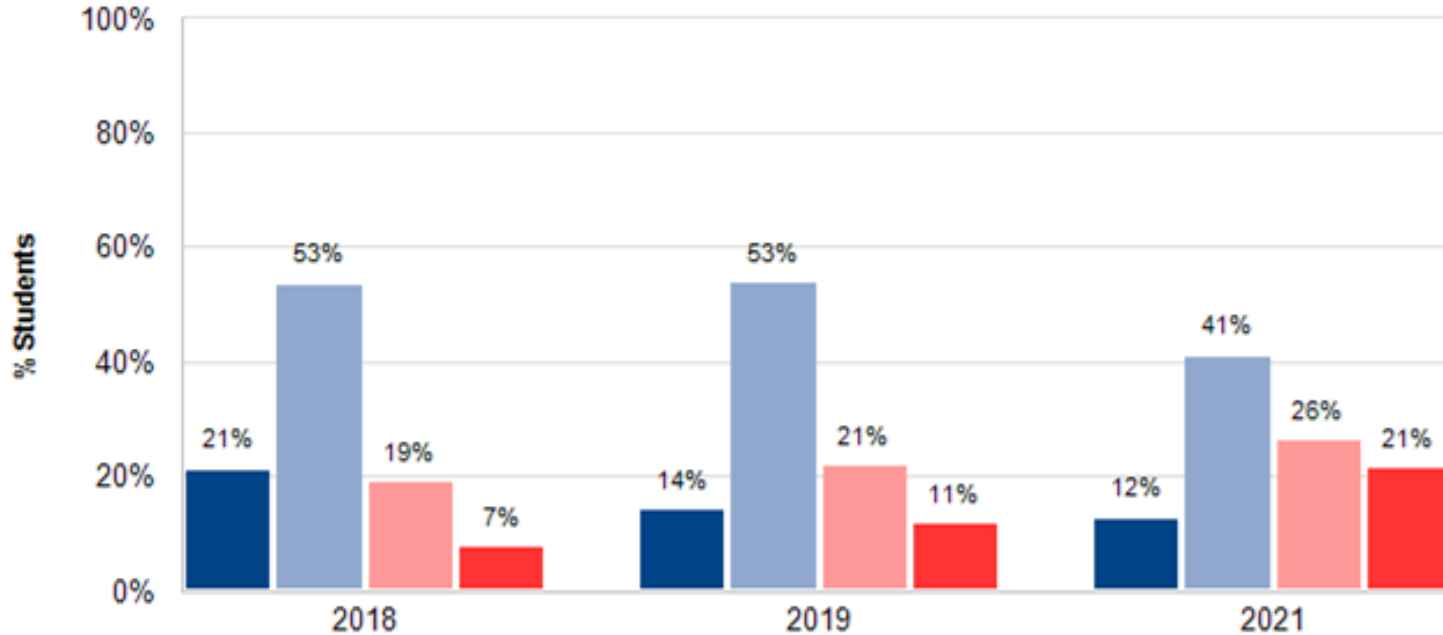


GRADE 9 INTRODUCTORY PHYSICS

MCAS Achievement Level

- Advanced
- Proficient
- Needs Improvement
- Warning/Failing

Student Group : All Students



Scores were relatively stable but it appears that scores in 18 and 19 but it appears that they declined in 21 because of the pandemic.

2

HOW DOES WILMINGTON COMPARE?



RADAR DISTRICT COMPARISONS

Radar districts are other public school districts in MA that have been identified as similar in profile. These similar-district lists are generated by algorithms using district type and size with 1) student demographics, and 2) municipalities' personal income and property value.

The communities most closely aligned at this time based on those two criteria are:

- Easton
- Hanover
- Long Meadow
- Marshfield
- Nashoba

It is important to keep in mind that DESE encourages districts to use RADAR data cautiously at this time because of the high level of variability among districts during the 2020-2021 school year .

Grade 3 ELA

Town	Exceeding & Meeting	Partially Meeting	Not Meeting
Long Meadow	73	22	4
Marshfield	71	26	2
Wilmington	68	30	3
Nashoba	68	28	5
Hanover	62	31	7
Easton	60	37	4
State	51	39	10

Grade 3 Math

Town	Exceeding & Meeting	Partially Meeting	Not Meeting
Long Meadow	56	37	7
Marshfield	54	39	7
Hanover	53	34	13
Wilmington	47	41	12
Nashoba	44	35	10
State	33	40	26
Easton	31	44	14

Grade 4 ELA

Town	Exceeding & Meeting	Partially Meeting	Not Meeting
Nashoba	75	21	5
Long Meadow	70	27	3
Marshfield	68	27	5
Wilmington	67	29	4
Hanover	63	30	7
Easton	56	37	7
State	49	38	13

Grade 4 Math

Town	Exceeding & Meeting	Partially Meeting	Not Meeting
Long Meadow	55	38	8
Nashoba	52	40	8
Easton	47	46	7
Hanover	47	44	9
Marshfield	47	44	8
Wilmington	42	49	9
State	33	43	24

Grade 5 ELA

Town	Exceeding & Meeting	Partially Meeting	Not Meeting
Long Meadow	82	15	2
Marshfield	72	26	2
Nashoba	63	35	2
Easton	62	35	3
Wilmington	59	36	5
Hanover	55	44	1
State	47	41	12

Grade 5 Math

Town	Exceeding & Meeting	Partially Meeting	Not Meeting
Marshfield	71	27	2
Long Meadow	61	35	4
Easton	56	38	6
Nashoba	50	47	3
Hanover	49	46	5
Wilmington	48	44	8
State	33	47	20

Grade 5 Science and Technology/Engineering

Town	Exceeding & Meeting	Partially Meeting	Not Meeting
Marshfield	65	33	3
Hanover	64	31	5
Easton	57	37	6
Nashoba	57	39	4
Wilmington	52	40	8
Long Meadow	51	40	9
State	42	39	19

Grade 6 ELA

Town	Exceeding & Meeting	Partially Meeting	Not Meeting
Easton	68	21	11
Nashoba	67	25	8
Long Meadow	65	24	11
Marshfield	60	27	13
Hanover	54	36	10
State	47	31	22
Wilmington	41	38	22

Grade 6 Math

Town	Exceeding & Meeting	Partially Meeting	Not Meeting
Hanover	55	33	11
Nashoba	54	38	8
Easton	51	38	12
Wilmington	41	49	10
Marshfield	41	45	14
State	33	44	23
Long Meadow	30	60	10

Grade 7 ELA

Town	Exceeding & Meeting	Partially Meeting	Not Meeting
Nashoba	67	28	5
Hanover	61	30	9
Marshfield	59	32	9
Long Meadow	56	32	12
Easton	55	36	9
Wilmington	50	37	13
State	43	37	20

Grade 7 Math

Town	Exceeding & Meeting	Partially Meeting	Not Meeting
Nashoba	60	36	4
Hanover	57	38	5
Long Meadow	53	41	6
Wilmington	49	44	7
Easton	46	49	5
Marshfield	46	42	12
State	35	47	18

Grade 8 ELA

Town	Exceeding & Meeting	Partially Meeting	Not Meeting
Long Meadow	62	32	6
Hanover	60	30	10
Marshfield	60	32	8
Nashoba	58	36	6
Wilmington	50	43	6
Easton	48	42	10
State	41	41	18

Grade 8 Math

Town	Exceeding & Meeting	Partially Meeting	Not Meeting
Nashoba	56	37	7
Hanover	49	42	8
Wilmington	49	41	10
Easton	48	43	10
Marshfield	44	47	9
Long Meadow	37	49	14
State	32	46	21

Grade 8 Science and Technology/Engineering

Town	Exceeding & Meeting	Partially Meeting	Not Meeting
Nashoba	72	24	4
Long Meadow	60	34	7
Easton	54	41	5
Marshfield	53	41	6
Hanover	53	40	7
Wilmington	47	44	9
State	41	43	16

Grade 10 ELA

Town	Exceeding & Meeting	Partially Meeting	Not Meeting
Hanover	83	16	1
Nashoba	82	13	4
Marshfield	81	17	2
Wilmington	81	14	5
Long Meadow	79	19	2
Easton	72	23	5
State	64	27	9

Grade 10 Math

Town	Exceeding & Meeting	Partially Meeting	Not Meeting
Long Meadow	76	21	3
Nashoba	75	18	7
Hanover	71	26	2
Easton	68	29	4
Marshfield	66	29	6
Wilmington	65	27	8
State	52	36	12

3

CELEBRATIONS, FOCUS AREAS, AND PLANS FOR IMPROVEMENT



AREAS TO CELEBRATE

ENGLISH LANGUAGE ARTS

Steady growth over time is evident in grades 3, 4, 5 and 10 with minimal or no negative impact in 2021 due to the pandemic.

MATHEMATICS

Grade 10 math shows growth over time and no obvious impact from the pandemic.

Steady growth over time is evident in grades 7 and 8, however, scores were impacted negatively in 2021.

SCIENCE

Grade 5 scores remained relatively stable even given the pandemic with minimal opportunity for hands-on instruction.



PLAN FOR IMPROVEMENT

ENGLISH LANGUAGE ARTS

- Universal screening, progress monitoring, and data meetings in grades K-5
- Continued professional development in literacy in grades K-5
- New intervention materials to support struggling readers, K-5
- Grade 6-8 literacy universal screening (iReady) administered in September
- Grades 6-8: Professional development focusing on interpreting literacy data and developing plans for improving literacy skills across all subject areas
- MS and HS ELA MCAS Prep Sessions for recommended students but also open to any interested students if spots are available
- MS Academic Support (after school) planning in development
- HS Academic Support available for all students after school



PLAN FOR IMPROVEMENT

MATHEMATICS

- Updated version of Envisions (2020 edition) fully aligned to MA standards, K-8
- New Math Universal Screening & Diagnostic Assessment, K-5
- Universal screening, progress monitoring & data meetings, K-5
- Tutors hired to provide math interventions for K-5 students
- Reinstated the K-5 STEM Coordinator position (went unfilled 2020-2021)
- New resources for math interventions, K-5
- Professional Development, K-5
 - ▷ Math assessments
 - ▷ Math interventions
 - ▷ Math workshop model
- MS and HS Math MCAS Prep Sessions for recommended students but also open to any interested students if spots are available
- MS after school Academic Support (planning in development)
- HS Academic Support will be available for all students after school



PLAN FOR IMPROVEMENT

SCIENCE AND TECHNOLOGY/ ENGINEERING

- In-person learning allows for hands-on interactive experiences for students which in itself is a significant benefit for students in science classrooms K-12.
- 2021-2022 is the first full year of implementation for the “new” K-5 science curriculum, Elevate Science (Roll out was impacted by the pandemic)
- Repeat PD (K-5) will be provided as needed (was provided in 19-20 and 20-21)
- Added Generation Genius, K-8, in 20-21 and renewed for 21-22
- Develop new STEM initiatives/activities for grades K-5 to promote engagement and interest in science, technology, and engineering.
- HS Science MCAS Prep sessions for recommended students but also open to any interested students if spots are available
- MS after school Academic Support (planning in development)
- HS after school Academic Support will be available for all students



QUESTIONS?