

Wilmington Public Schools

Elementary School
Building Project

Planning & Programming Workplan

SMMA

dw
DORE + WHITTIER



June 21, 2023



Overview

Participants

Participation Platforms

Events

Outcomes

Participants

- **Students**
- **Parents**
- **Faculty (representatives of all disciplines and specialties)**
- **Staff**
- **Building Administrators**
- **District Administrators**
- **Members of the School Committee**
- **Members of the Select Board**
- **Members of the Finance Committee**
- **Members of the School Building Committee**
- **Senior Citizens**
- **Citizens in the local business community**
- **Members of Parks and Recreation**



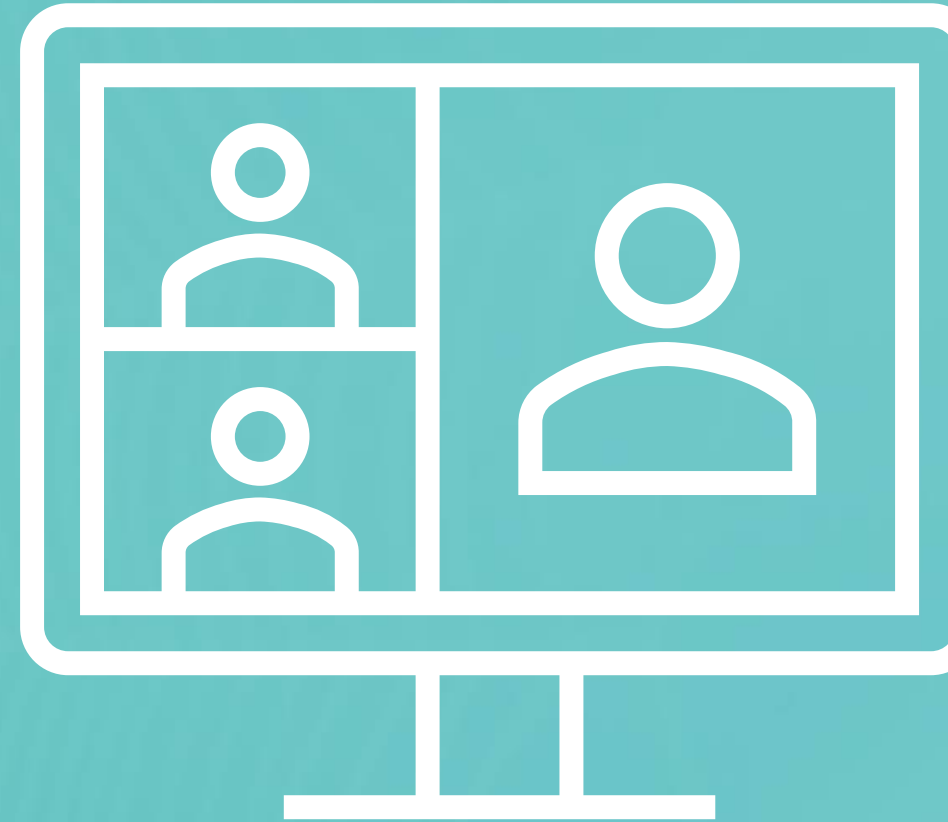
Participants

30 to 40



Participation Platforms

- In-person
- Hybrid (Synchronous)
- Dual Session (AM & PM)
- Remote (Asynchronous)



Participation Platforms



Go to www.menti.com and use the code 35 62 36

What does playful learning look like?

Joyful, unobstructed thinking

Kids working together collaboratively and cooperatively

Hands on exploring

Engaging

engaging in meaningful experiences.

Building, exploring, creating

Joyful

Imaginative/Inventing

activities that allow students come

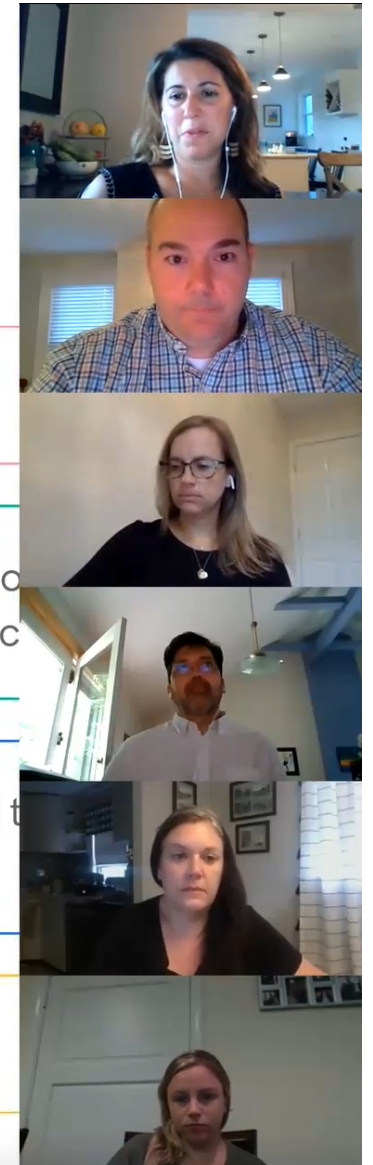
Movement

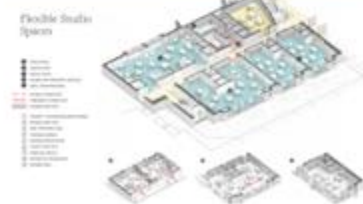
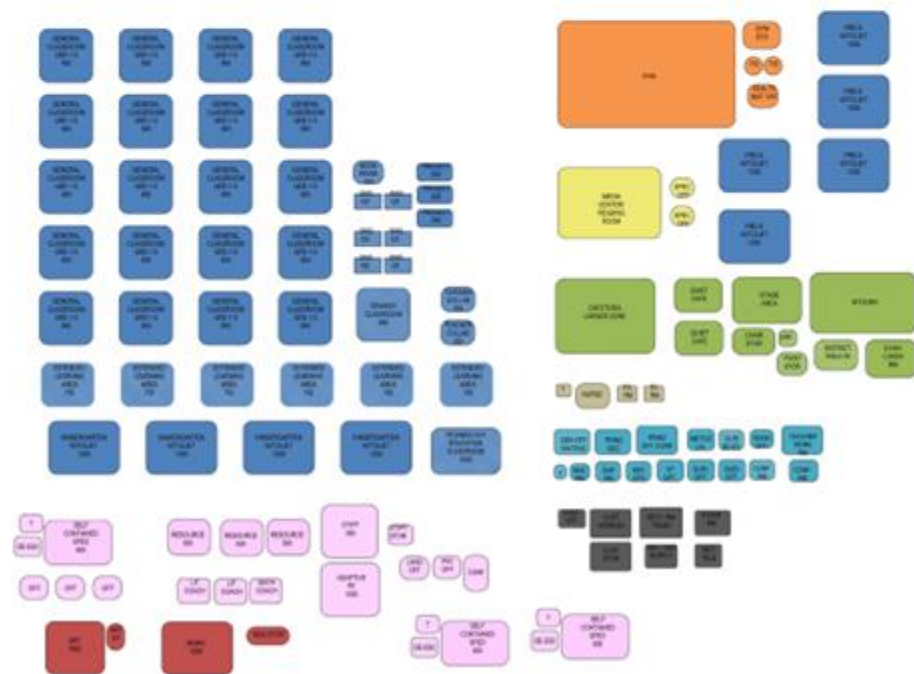
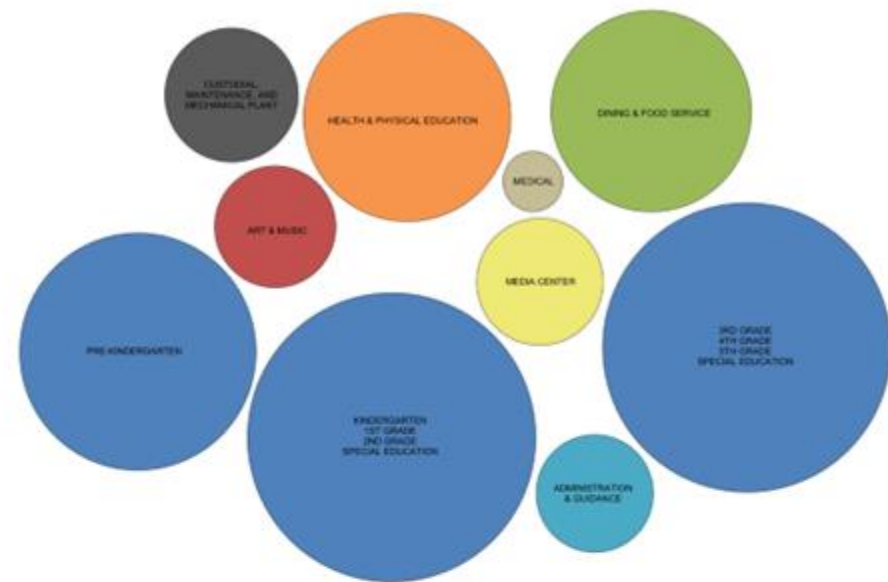
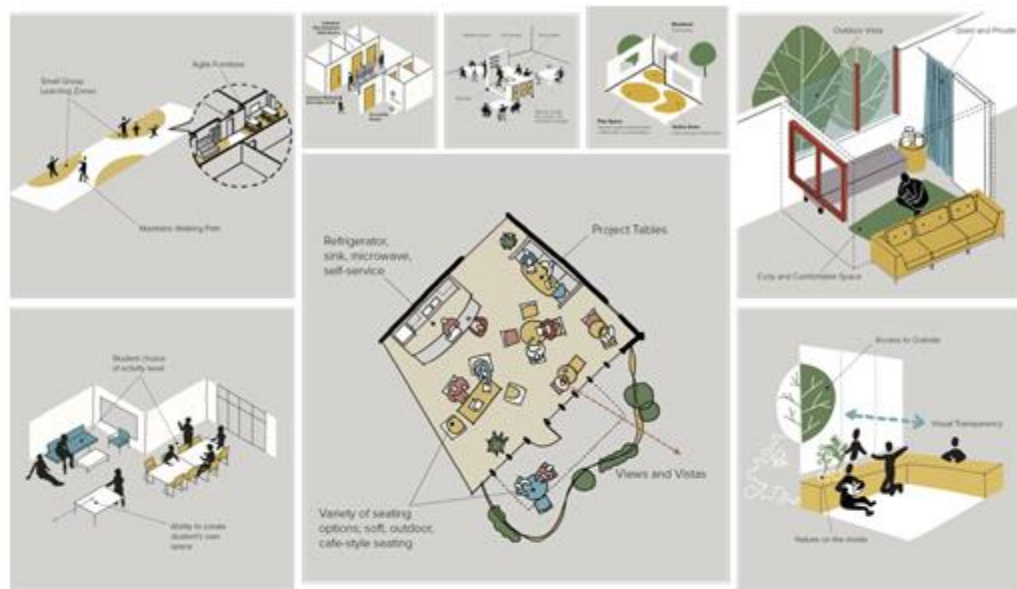
Engaged creative, thoughtful learning that invokes curiosity

Student directed and teacher supported

Student choice

Press ENTER to pause scroll





Events

- Principals' Interviews and Educational Walk-thru
- Visioning Session #1, #2, #3, and #4
- Preparation of the Space Summaries
- Preparation of the Educational Program Narrative(s)

Visioning #1

Fall 2023

**District-wide
Planning**

Visioning #2

Fall 2023

**Learning &
Teaching**

Visioning #3

Fall 2023

**Overall
Planning**

Visioning #4

Fall 2023

**Individual
Space Planning**

Visioning #1

Fall 2023

District-wide Planning

- 4 Hours
- Hybrid
(Synchronous)
- Dual Sessions

Visioning #2

Fall 2023

Learning & Teaching

- 3 Hours
- Hybrid
(Synchronous)
- Dual Sessions

Visioning #3

Fall 2023

Overall Planning

- 2 Hours
- In-person
- Remote
(Asynchronous)

Visioning #4

Fall 2023

Individual Space Planning

- 2 ½ Hours
- In-person
- Remote
(Asynchronous)

Visioning #1

Fall 2023

District-wide Planning

- ☒ Issues
- ☒ Grade Configuration
- ☒ School Count & School Size

Visioning #2

Fall 2023

Learning & Teaching

- ☒ Process
- ☒ Educational Intent
- ☒ Learning Experiences

Visioning #3

Fall 2023

Overall Planning

- ☒ Overall Site & Building Planning
- ☒ Guiding Principles

Visioning #4

Fall 2023

Individual Space Planning

- ☒ Precedents
- ☒ Space Features

Visioning #1

Fall 2023

District-wide Planning

- ☒ Issues
- ☒ Grade Configuration
- ☒ School Count & School Size

Visioning #2

Fall 2023

Learning & Teaching

- ☒ Process
- ☒ Educational Intent
- ☒ Learning Experiences

Visioning #3

Fall 2023

Overall Planning

- ☒ Key Spaces
- ☒ Overall Site & Building Planning
- ☒ Guiding Principles

Visioning #4

Fall 2023

Individual Space Planning

- ☒ Precedents
- ☒ Space Features

① Educational Narrative

② Overall Planning Diagrams

③ Space Summary



Wilmington Public Schools
Elementary School
Building Project

Thank you

SMMA

dw
DORE + WHITTIER



June 14, 2023